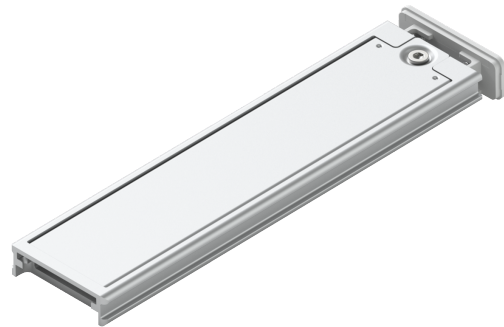
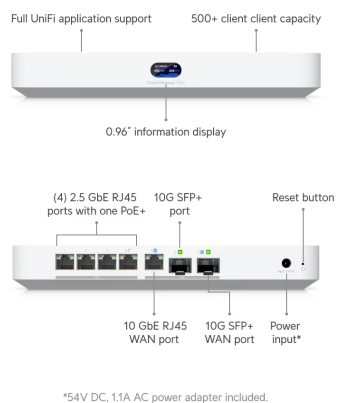




Cloud Gateway Fiber + M.2 SSD Tray

UCG-Fiber + UACC-SSD-Tray



Overview (UCG-Fiber)

Dimensions

212.8 x 127.6 x 30 mm
(8.3 x 5 x 0.5 ")

UniFi Application Suite

- Network ✓
- Protect ✓
- Access ✓
- Talk ✓
- Connect ✓

Managed UniFi Devices

50+

Managed Cameras	(15) HD (8) 2K (5) 4K
Simultaneous Users Connected	500+
Max. WAN Port Count	6
Default WAN Ports	(1) 10G SFP+ (1) 10 GbE RJ45
Port Layout	
<ul style="list-style-type: none"> • 2.5 GbE RJ45 	4 (2.5G/1G/100M/10M)
<ul style="list-style-type: none"> • 10 GbE RJ45 	1 (10G/2.5G/1G)
<ul style="list-style-type: none"> • 10G SFP+ 	2 (10G/1G)
IDS/IPS Throughput	5 Gbps
Form Factor	Compact desktop

Security

Stateful Firewall	✓
Application-Aware Layer 7 Firewall	✓
DPI & Traffic Identification	✓
Zone-Based Firewall Advanced Filtering (Regions, Domains, Apps)	✓
Content Filtering	✓
Intrusion Prevention (IPS/IDS)	✓
Ad Blocking	✓
IDS/IPS Signatures	55,000+ with CyberSecure
VLAN/Subnet-based Traffic Segmentation	✓

VPN & SD-WAN

License-Free SD-WAN ✓

Site-to-Site VPN

• Site Magic ✓

• IPsec ✓

• OpenVPN ✓

VPN Server

• Identity Endpoint One-Click VPN ✓

• Teleport Zero-Configuration VPN ✓

• WireGuard ✓

• OpenVPN ✓

• L2TP ✓

VPN Client

• OpenVPN ✓

• WireGuard ✓

Networking

Multi-WAN Load Balancing ✓

Dynamic Routing

• OSPF ✓

Advanced QoS ✓

Multicast DNS (mDNS) ✓

Advanced NAT (SNAT / DNAT / Masquerade / NAT Pooling / 1-to-1 NAT)	✓
Integrated RADIUS Server	✓
RADIUS over TLS (RadSec)	✓
Additional Internet Failover with UniFi LTE Backup	✓
Internet Quality and Outage Reporting	✓
MAC Address Table Size	4,000

Hardware

NVR Storage	Selectable NVMe SSD up to 2 TB
PoE Budget	30W
Voltage Range PoE Mode	50-57V
Max. Power Consumption	29.4W (Excluding PoE output)
Power Method	DC jack (54V DC/1.1A)
Power Supply	54V DC/1.1A (adapter included)
Supported Voltage Range	100–240V AC
Processor	Quad-core ARM® Cortex®-A73 at 2.2 GHz
System Memory	3 GB
Weight	Without SSD: 675 g (1.5 lb) With SSD: 734 g (1.6 lb)
Enclosure Material	Polycarbonate
LCM Display	0.96" status display
Management	Ethernet Bluetooth

LEDs

- Ethernet ✓
- SFP+ ✓

Button (1) Factory-reset

ESD/EMP Protection Air: ± 8kV, contact: ± 4kV

Ambient Operating Temperature 0 to 40° C (32 to 104° F)

Ambient Operating Humidity 5 to 95% noncondensing

NDAA Compliant ✓

Certifications CE, FCC, IC

Overview (UACC-SSD-Tray)

Dimensions 123.4 x 31.1 x 11.2 mm
(4.9 x 1.2 x 0.4")

Weight 53 g (1.9 oz)

Enclosure Material Aluminum alloy, polycarbonate, stainless steel